

# BAD ELF FLEX QUICK START GUIDE®



# ANATOMY OF THE FLEX



• STATUS BAR  
• HOME SCREEN

• STATUS LEDS  
• DIRECTIONAL KEYS  
• ENTER KEY  
• BACK/CANCEL KEY  
• POWER KEY



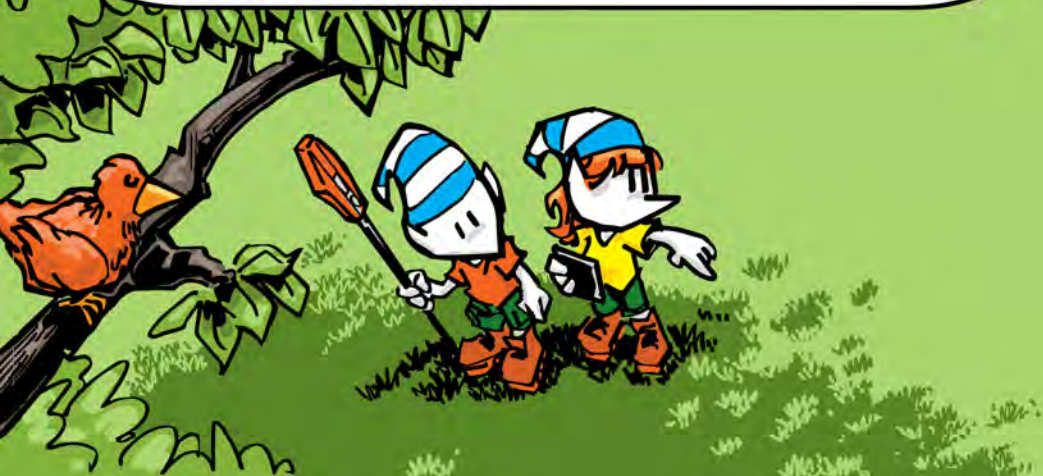
# **TABLE OF CONTENTS**

## **IN THE OFFICE**

- CHARGING YOUR FLEX**
- PAIRING YOUR FLEX**
- INSTALLING & CONNECTING**
- LOADING YOUR TOKENS**

## **IN THE FIELD**

- LOCKING ON SATELLITES**
- BEST PRACTICES**

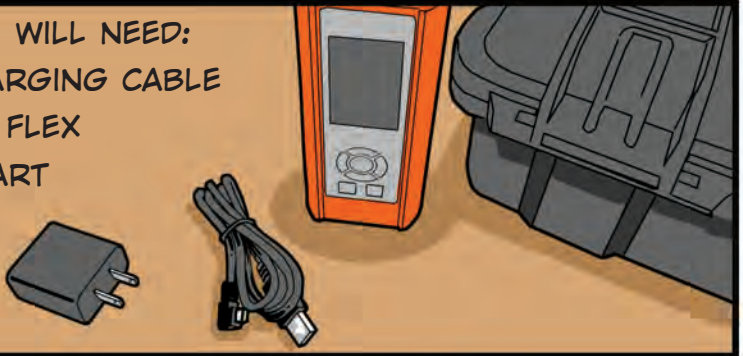


# 1

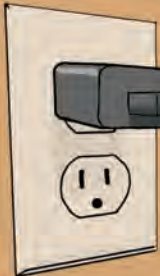
# CHARGING YOUR FLEX

THINGS YOU WILL NEED:

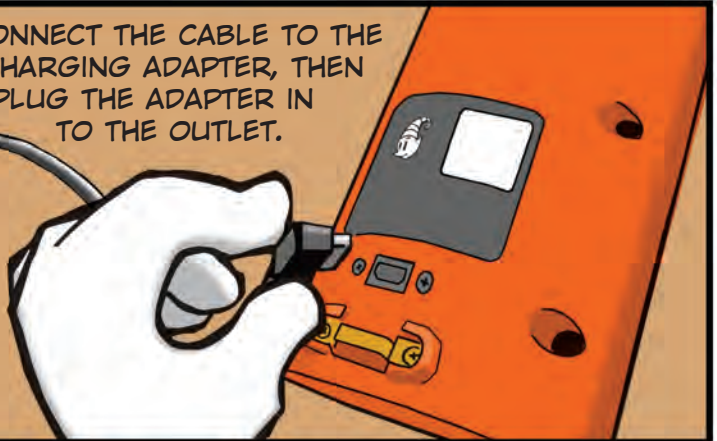
- USB CHARGING CABLE
- BAD ELF FLEX
- WALL WART



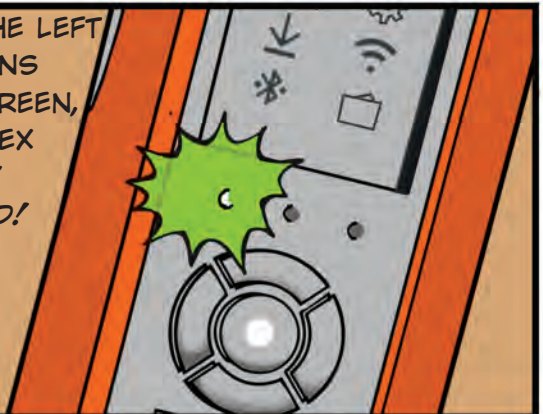
CONNECT THE CABLE TO THE CHARGING ADAPTER, THEN PLUG THE ADAPTER INTO THE OUTLET.



FINALLY, PLUG THE CABLE INTO THE FLEX TO CHARGE.



WHEN THE LEFT LED TURNS SOLID GREEN, YOUR FLEX IS FULLY CHARGED!



\* TIME TO FULL CHARGE WILL VARY BASED ON THE INITIAL BATTERY LEVEL. USE 2 AMP CHARGER FOR BEST RESULTS.

# 2

# PAIRING YOUR FLEX

THINGS YOU  
WILL NEED:

- FLEX
- PHONE  
OR  
TABLET

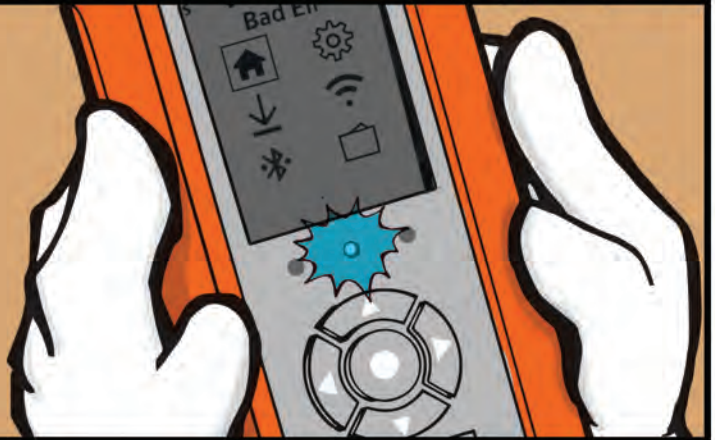


OPEN YOUR  
PHONE'S  
BLUETOOTH  
SETTINGS.  
SELECT THE  
**BAD ELF FLEX**  
**XXXXX** FOR  
PAIRING.



FOLLOW THE  
PROMPTS ON  
YOUR PHONE  
AND YOUR FLEX  
TO COMPLETE  
THE PAIRING  
PROCESS.

THE RIGHT  
LED TURNS  
BLUE WHEN  
PAIRED.


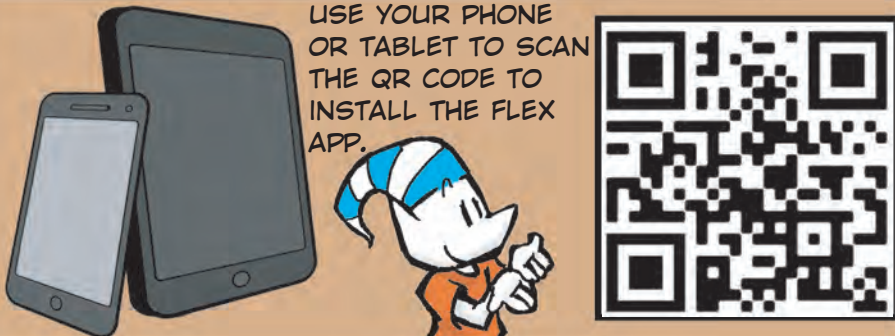


CONFIRM YOUR  
**BAD ELF FLEX XXXXX**  
APPEARS IN  
YOUR BLUETOOTH  
LIST ON YOUR  
PHONE.

# 3

# INSTALLING & CONNECTING

USE YOUR PHONE OR TABLET TO SCAN THE QR CODE TO INSTALL THE FLEX APP.



IF YOU PREFER, YOU CAN DOWNLOAD THE APP AT [BAD-ELF.COM/FLEX/APP](http://BAD-ELF.COM/FLEX/APP)


CONFIRM THAT THE BAD ELF FLEX APP APPEARS ON YOUR PHONE OR TABLET.

LAUNCH THE APP!



USE THE BAD ELF FLEX APP TO:

- CHECK FLEX STATUS
- ACTIVATE EXTREME MODE
- PURCHASE/TRANSFER TOKENS
- ENGAGE NTRIP CLIENT
- LOG DATA
- UPDATE FLEX FIRMWARE
- CONFIGURE FLEX RECEIVER SETTINGS



# 4

# LOADING YOUR TOKENS

IF YOU PURCHASED A BAD ELF FLEX STANDARD, YOU WILL FIND A BAD ELF TOKEN CARD ATTACHED ON THE INSIDE BACK COVER OF THIS GUIDE. IF YOU PURCHASED AN EXTREME PACKAGE, YOU CAN SKIP THIS PAGE!

EACH TOKEN WILL ENABLE EXTREME MODE ON YOUR BAD ELF FLEX FOR A 24-HOUR PERIOD.

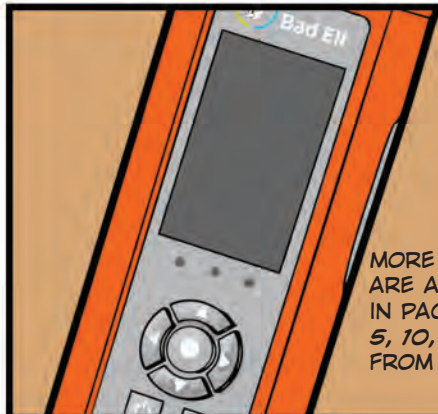
EXTREME MODE ENABLES YOU TO...

- USE RTK WITH A LOCAL CORS OR VRS NETWORK
- USE L-BAND SATELLITE CORRECTIONS IN PLACES WHERE SBAS OR INTERNET ACCESS IS NOT AVAILABLE



USE THE BAD ELF FLEX APP TO LOAD TOKENS ONTO YOUR FLEX:

- SCAN THE QR CODE ON THE BACK OF THE TOKEN CARD
- OR -
- TYPE IN THE SIX CHARACTER TOKEN PACK CODE ON THE BACK OF THE TOKEN CARD
- TRANSFER SOME OR ALL OF YOUR TOKENS TO YOUR FLEX THE NEXT TIME YOU CONNECT VIA BLUETOOTH



EACH TOKEN ENABLES EXTREME MODE FOR 24 HOURS. REMEMBER, THE CLOCK STARTS TICKING ONCE YOU ACTIVATE THE TOKEN, SO WAIT UNTIL YOU ARE READY TO WORK IN THE FIELD!

MORE TOKENS ARE AVAILABLE IN PACKS OF 1, 5, 10, AND 20 FROM BAD ELF.



5

# LOCKING ON SATELLITES

GET OUTSIDE AND FIND A PLACE WITH A CLEAR VIEW OF THE SKY FOR YOUR FIRST LOCK.



GIVE YOUR FLEX 5-10 MINUTES OUTSIDE WITH A CLEAR SKY VIEW TO GET ITS FIRST LOCK.

THE MIDDLE LED (GPS STATUS) WILL TURN GREEN WHEN YOU OBTAIN A LOCATION LOCK.

ONCE YOU HAVE YOUR FIRST LOCK, YOU CAN START COLLECTING DATA! IT'S BEST TO WAIT 30 SECONDS EACH TIME YOU MOVE TO A NEW POINT.





# BEST PRACTICES

## OPTIMIZE YOUR SATELLITE VISIBILITY

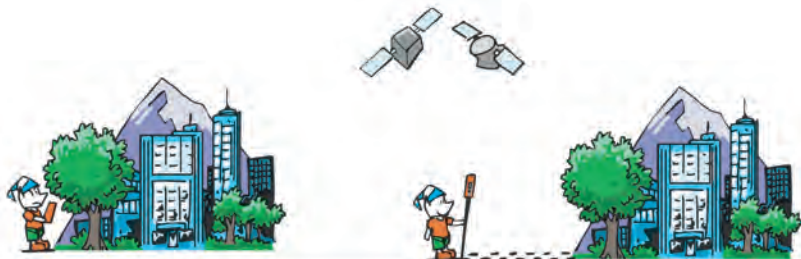
FOR BEST RESULTS, MINIMIZE THE OBSTRUCTIONS BETWEEN YOUR FLEX AND THE SKY.

### LESS THAN OPTIMAL

BUILDINGS, TREES, LARGE METAL OBJECTS, AND YOUR BODY CAN BLOCK SATELLITE SIGNALS, THEREBY DEGRADING LOCATION ACCURACY.

### FOR BEST RESULTS

OBTAINING BETTER LINE OF SIGHT TO MORE SATELLITES WITH A VARIETY OF ANGLES AND HORIZON POSITIONS IMPROVES LOCATION ACCURACY.



## ORIENT YOUR FLEX FOR BEST PERFORMANCE

THE FLEX ANTENNA LIVES AT THE TOP OF YOUR FLEX, UNDER THE PLASTIC CAP.

ORIENT THE FLEX AS VERTICALLY AS POSSIBLE TO ALLOW THE BEST SKY VIEW.



# BEST PRACTICES

## INITIALIZE, STARTUP, SETTLE, & COLLECT

- 6** WAIT 30 SECONDS AFTER MOVING THE FLEX FOR SUBSEQUENT DATA POINTS FOR COLLECTION



- 1** CONFIGURE YOUR FLEX RECEIVER BEFORE HEADING OUT INTO THE FIELD



- 2** START UP OUTSIDE WITH A CLEAR SKY VIEW TO GET A GOOD INITIAL SIGNAL LOCK



- 5** MOVE ALONG TO YOUR NEXT DATA COLLECTION SPOT



- 4** COLLECT YOUR DATA



- 3** BEFORE COLLECTING YOUR FIRST POINT, WAIT 5-10 MINUTES FOR YOUR LOCATION TO SETTLE



## PRACTICE GOOD BLUETOOTH HYGIENE

BLUETOOTH CONNECTIONS WORK BEST WHEN THE FLEX AND PHONE (OR TABLET) ARE NO MORE THAN 10-15 FEET APART.



# QUESTIONS?

CONTACT THE BAD ELF  
SUPPORT TEAM WITH YOUR  
QUESTIONS VIA EMAIL:

[SUPPORT@BAD-ELF.COM](mailto:SUPPORT@BAD-ELF.COM)



# MORE INFO?

CHECK OUT OUR INFORMATIVE  
AND EDUCATIONAL VIDEOS:

[BAD-ELF.COM/VIDEOS](http://BAD-ELF.COM/VIDEOS)



IF YOU RECEIVED A  
BAD ELF FLEX STANDARD MODEL,  
YOUR COMPLIMENTARY  
TOKEN CARD  
SHOULD BE ATTACHED HERE.



**Bad Elf**®

BAD ELF, LLC  
41 CROSSROADS PLAZA, SUITE 110  
WEST HARTFORD, CT 06117

EMAIL: [SUPPORT@BAD-ELF.COM](mailto:SUPPORT@BAD-ELF.COM)  
WEB: [BAD-ELF.COM/FLEX](http://BAD-ELF.COM/FLEX)

COPYRIGHT © 2020 BAD ELF, LLC  
ALL RIGHTS RESERVED

ARTWORK BY MATT RYAN  
[FREELUNCHCOMICS.COM](http://FREELUNCHCOMICS.COM)

20.12