



Wombat

Wi-Fi SD Card & USB Drive Reader



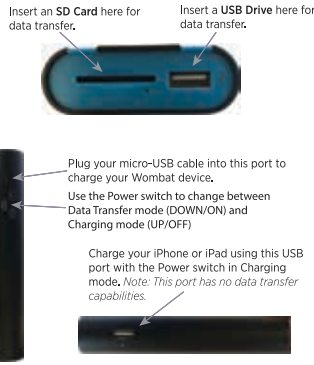
BE-DSE-10000 Bad Elf Wombat Piston Edition
BE-DSE-14000 Bad Elf Wombat Turbine Edition

1 Face to Face with Wombat



The **USB LED** indicates activity on an inserted USB drive.
The **SD Card LED** indicates activity on an inserted SD Card.
These **Battery Level LEDs** indicate your battery's charge level.
The **Wi-Fi LED** indicates Wi-Fi activity.
The **Power LED** indicates that the Wombat is powered ON for data transfer.

2 Side by Side with Wombat



Insert an **SD Card** here for data transfer.
Insert a **USB Drive** here for data transfer.
Plug your micro-USB cable into this port to charge your Wombat device.
Use the **Power switch** to change between **Data Transfer mode (DOWN/ON)** and **Charging mode (UP/OFF)**.
Charge your iPhone or iPad using this **USB port** with the **Power switch** in **Charging mode**. *Note: This port has no data transfer capabilities.*

4 Charge your Bad Elf Wombat

You do **NOT** need to turn your Wombat on to charge it.

Use the supplied micro-USB to USB cable to connect your Wombat to a USB power source.

You can charge your Wombat from any laptop or USB power source, preferably a high-current (2A or greater) source.

Tap the silver triangle on the front face of your Wombat. When fully charged, all four blue LEDs will illuminate. When the battery is empty, a single LED will flash.

3 Download Apps

Visit the App Store
Open the App Store app and go to the search screen.

Bad Elf Wombat Utility App
Search for "Bad Elf Wombat" in the App Store. Install the app.

Jeppesen JDM Mobile (optional)
If you have a JDM account with Jeppesen to download avionics database updates, install the JDM app on your iPhone/iPad. Search for "Jeppesen JDM Mobile" in the App Store. Install the app.

5 Charge your iPhone or iPad

You do **NOT** need to turn on your Wombat to charge your phone or tablet.

Plug the charging cable that came with your phone or tablet into one of the USB ports on your Wombat, and connect the other end to your phone or tablet.

The side USB port on your Wombat supplies up to 2.4A and can charge an iPad or fast charge an iPhone.

The top USB port on your Wombat can charge a phone at 1.0A, but cannot charge an iPad.

You may need to tap the silver triangle on the front face of your Wombat to begin charging.

6 Wombat Wi-Fi Operations

Slide the switch on the side of your Wombat to the down position to turn it on.

After about a minute, the blue Wi-Fi LED will illuminate, indicating the Wombat is running with its Wi-Fi enabled.

Use the Settings app on your iPhone/iPad to connect to the Wombat's Wi-Fi network. The Wi-Fi password is printed on the back of your Wombat. Or point your camera at the QR code on the back of your Wombat and iOS will prompt you to join the Wombat Wi-Fi network.

When you're done working with your Wombat, slide the switch to the up position to turn it off.

8 Harvest & share flight logs

If your avionics records flight logs to USB or SD, use the Wombat app to harvest and share them with other apps like CloudAhoy or with Internet services like Cirrus Reports or Savvy Analysis.

Use the top SD or USB port, *never the side USB port*, for sharing data logs.

10 Important Notes

Do NOT use your Wombat to charge a laptop computer.

Connecting your iPhone/iPad to your Wombat's Wi-Fi network will NOT give your iPhone/iPad access to the Internet.

The side USB port on your Wombat is ONLY for charging. Use only the top SD or USB ports for data transfers.

Need more help?

Contact us at support@bad-elf.com

7 Install avionics database updates

If you have a JDM account through Jeppesen, use the JDM app to download and install avionics updates.

If you get your avionics databases from OEM websites like Honeywell or Rockwell-Collins, use the Wombat app to download and install avionics updates.

Use the top SD or USB port, *never the side USB port*, for database updates.

9 Update Wombat Firmware

Connect to your Wombat over Wi-Fi (see Step 5 above).

Run the Bad Elf Wombat app.

Tap the "hamburger" menu in the top left corner, then tap **My Wombat** and **Check for Firmware Update**.



2 Tunxis Rd, Suite 206
Tariffville, CT 06081
+1.855.422.3353

© 2015-2018 Bad Elf, LLC. Bad Elf and the Bad Elf logos are registered trademarks of Bad Elf, LLC. SD is a registered trademark of SD. Wi-Fi is a registered trademark of Wi-Fi. USB and the USB logo are registered trademarks of the USB Implementor's Forum. NavData is a trademark of Jeppesen Sanderson, Inc. iPad, iPhone, iPod, and iPod touch are registered trademarks of Apple Inc., registered in the U.S. and other countries.

v2 JULY 2018

Designed in the USA. Made in China. Please recycle.